

GLASSHOUSE
Select 2025
THEATRE PROGRAM



GLASSHOUSE PORT MACQUARIE

Principal Partner of the Glasshouse 2025 Theatre Program



Government Sponsors



PORT MACQUARIE
HASTINGS
COUNCIL

A facility of
Port Macquarie-Hastings
Council



NSW
GOVERNMENT

The Glasshouse is supported by
the NSW Government through
Create NSW

Founding Sponsors



AST
Australian Solar Timbers
Natural Excellence



Forestry
Corporation

Education @
Glasshouse Partner



Where your goals are ours

Co-Presenting
Partner



MID NORTH COAST
COOPERATIVE
LIBRARY SERVICE

Encore
Sponsor



FAMILY WINEMAKERS

Accommodation
Partner



CENTRO PORT MACQUARIE



A Message from the

2025 Principal Theatre Program Partner

As we embrace a new year, we are proud to again be the Principal Theatre Program Partner. Theatre brings people together to tell stories and share light-hearted moments. It's where creativity knows no bounds and storytelling transcends boundaries. Now in our 8th year, our unique and exciting collaboration brings the beauty of live theatre to our community.

In this era of digital transformation, our television network has made a steadfast commitment to celebrating the arts in all their glory. We believe in the power of storytelling and the emotional resonance that only the performing arts can deliver. Our dedication to this art form goes beyond entertainment; it's a genuine passion for the magic of theatre. The stage has always been a sanctuary for artistic expression, a place where the human spirit soars through the melodies of a musical, the eloquence of a well-crafted play and the boundless creativity of a dance performance. It's a place where imagination knows no bounds, and where actors, musicians and dancers come together to evoke emotions, provoke thought and transport audiences to new worlds.

We understand the value of preserving and promoting the arts and we are dedicated to bringing these vibrant and diverse performances to our community. Our partnership represents a fusion of creativity, technology and a shared commitment to nurturing the arts. Many current small and big screen actors and actresses started their career on a theatre stage.

The theatre allows patrons to reconnect and escape to another world. It provides opportunities for enhanced relationships, collaboration and engagement within our regions and communities at social, community and business levels. As Australia's largest regional television broadcaster, the WIN Network has a long and proud tradition of bringing News, sport and engaging viewing with our TEN, Peach, Bold, Sky News Regional along with Nine, Gem, Go, Life and 9NOW channels to Northern NSW.

Together, we will ensure that the arts continue to thrive and inspire generations to come. We wish all Glasshouse Members and audiences a fantastic year in 2025. Please enjoy the Glasshouse SELECT 2025 Theatre Program.

JONATHON RYAN
Manager Port Macquarie & Taree

Partner Offers

Thanks to our accommodation partner, Mercure Centro Hotel Port Macquarie and Birdrock Bar & Grill, Glasshouse Members and current Glasshouse show ticket holders can enjoy exclusive offers.



Birdrock Bar & Grill Offers

All Ticket Holders Offer

Purchase two main meals and receive either a complimentary bottle of wine OR one complimentary entrée.*^

Glasshouse Member Exclusive Offer

Purchase two main meals and receive your choice of two complimentary drinks from the Classic Cocktails Menu.**^

TO BOOK:

P: 02 6582 0808

Guests are required to present a valid show ticket on arrival.

BIRDROCK
BAR | GRILL



Mercure Accommodation Offer

Receive 15% off all room types and accommodation packages (eg: room + breakfast).*^

TO BOOK:

P: 02 6583 0830

E: reservations@centrohotel.com.au

Password: GLASSHOUSE

Guests are required to present a valid show ticket at check in.

MERCURE
HOTEL
CENTRO PORT MACQUARIE

*Offer available to patrons holding a current Glasshouse show ticket.

** Present your 2025 Glasshouse Membership card to take advantage of this offer.

^ Not available in conjunction with any other discounts. Subject to availability and all rates are nett rates. Must book in advance. Offer valid until 30 December 2025.



Proud Member 2025

Welcome

Welcome to a new year of theatrical wonders and musical delights with Glasshouse SELECT 2025!

Every year I look around the country for great performances. Australia is so lucky to have many talented creatives and it's a great privilege to bring them to the Glasshouse stage each year. In 2025, I'm excited by the wonderful theatre we have for you and I strongly recommend seeing a performance of *Scenes from the Climate Era* by the outstanding **Belvoir St Theatre**. An iconic theatre company, this will be the first time Belvoir have performed one of their productions at the Glasshouse, so we are very lucky to be presenting two performances of this show.

It's a very clever, perceptive and astutely humorous production delivered by a highly talented cast. "*Where have we been, where are we now and where could we go*", is

cleverly demonstrated using the power of theatrical storytelling, making you think, laugh and hope.

This is honestly one not to be missed!

Thank you to WIN Network for continuing to sponsor our Theatre Program for an eighth year! Their ongoing commitment to be our Principal Partner ensures our community has continued access to first-class entertainment. Thank you also to our Founding and Presenting Partners for their commitment to the Performing Arts.

So, make us a regular date in your 2025 calendar, experience the benefits of becoming a Glasshouse Member and come along for a wonderful time at the theatre.

BEC WASHINGTON

Curator, Annual Glasshouse SELECT Theatre Program

ACKNOWLEDGEMENT OF COUNTRY

We acknowledge the Birpai people, the traditional owners of the land in which we work and live, and pay our respects to Elders past, present and emerging. We extend our respect to all Aboriginal and Torres Strait Islander people who choose to call Port Macquarie-Hastings home.

THE WHARF REVUE

**T
H E
E N D
O F T H E
W H A R F A S
W E K N O W I T ! ! !**

**LAST
SHOW
EVER!**



GLASSHOUSE PORT MACQUARIE PRESENTS A SOFT TREAD PRODUCTION

The Wharf Revue: The End Of The Wharf As We Know It

CREATED AND WRITTEN BY JONATHAN BIGGINS, DREW FORSYTHE AND PHILLIP SCOTT

PERFORMED BY JONATHAN BIGGINS, MANDY BISHOP, DREW FORSYTHE, PHILLIP SCOTT AND DAVID WHITNEY

Wednesday 5 March, 8pm

After twenty-five years in the harsh and unforgiving spotlight of politics, The Wharf Revue has decided to step away from public life.

"It's an opportunity to spend more time with family," said a spokesperson. "At the end of the day, this is about the need for renewal. We'll serve one last term to max out the super and then try to pick up some kind of consultancy work or do a series of "Survivor" - look, it's too early to say but it has been an honour to serve the Australian people."

Many public figures who've appeared in the show regularly over the years are lining up for a place in the final hurrah: Keating, Howard, Downer, Costello, Gillard, Abbott, Carr and other throwbacks too numerous to mention. Those who bear the torch of democracy today: Lambie, Hanson, Bandt, Dutton and Albo - a veritable "Who's that?" of Australian politics.

So join us for this joyous yet bitter-sweet send-off to one of the great national theatrical institutions - but please, no flowers by request.



DURATION 90 minutes (no interval)
TICKETS \$79 Adult | \$69 Member | \$74 Concession
Transaction fees may apply.
WARNINGS Contains strong language and adult themes.
Recommended for ages 13+.

Photos: Vishal Pandey





“A TRIUMPH!”

- TIME OUT

CDP KIDS PRESENTS



THE VERY HUNGRY
CATERPILLORTM

CREATED BY JONATHAN ROCKEFELLER

SHOW

BASED ON ERIC CARLE'S BOOKS

TM & © PRH

WWW.HUNGRYCATERPILLARSHOW.COM

cdpKids



GLASSHOUSE PORT MACQUARIE AND CDP KIDS PRESENT

The Very Hungry Caterpillar Show

Created by Jonathan Rockefeller. Based on Eric Carle's Books

Wednesday 12 March, 10am, 12pm & 4.30pm

"and – pop! – out of the egg came a tiny and very hungry caterpillar."

One of the most-read and famous children's books of all time, *The Very Hungry Caterpillar* emerges off the page in a masterful theatrical experience for children 18 months+ and their adults.

Created by Jonathan Rockefeller, the production features a menagerie of over 75 magical puppets, including the star of the show – *The Very Hungry Caterpillar* – and an Australian cast who bring these beloved books to life on stage.

Alongside *The Very Hungry Caterpillar*, the show features three other Eric Carle stories – *Brown Bear, Brown Bear, What Do You See?*, *Ten Little Rubber Ducks* and *The Very Busy Spider*.

The team behind the Australian tours of *The Gruffalo*, *Spot* and *The 13, 26, 52, 78 & 91-Storey Treehouses* will excite, educate and entertain new readers and first-time theatre-goers, while those who grew up with these books will delight in experiencing one of the most popular children's books ever written. Don't miss out!

"COLOURFUL, ENGAGING, CHARMING."

THE HUFFINGTON POST



DURATION 50 minutes (no interval)

TICKETS \$30 Single
Transaction fees may apply.



An engaging
spectacle of
drumming,
dance, comedy
and circus for
ages 6+



NOMINEE
2023 MELBOURNE FRINGE
FESTIVAL AWARDS



GLASSHOUSE PORT MACQUARIE AND JUNKYARD BEATS PRESENT

JUNKLANDIA

Monday 7 April, 5pm & Tuesday 8 April, 10am & 12pm

JUNKLANDIA is an engaging and interactive spectacle of drumming, dance, circus and comedy guaranteed to excite and inspire KIDS and families!

Siblings from the faraway planet 'JUNKLANDIA' embark on an EPIC mission to Earth to teach the Junklandian ways of music and creative recycling! With a hilarious language of gibberish and rhythm, this show is accessible to any age and nationality.

The show ends with an incredible 'JUNK Orchestra' where each audience member, equipped with a recycled instrument, will come together to create a one-of-a-kind Junkyard Band!

You won't look at recycled materials the same way after watching this show!

"Talented performers, quality show, meaningful message."

- Kerry, mother of 2, Kyneton Town Hall



DURATION 75 minutes (no interval)

TICKETS \$30 Single
Transaction fees may apply.

WARNINGS Loud noises, light and smoke effects.



**Epic Aussie
anthems,
phenomenal
vocals, an
exceptional
cabaret
experience**

★★★★★

"One word describes this show: perfect."

- The Edinburgh Fringe Review

★★★★★

"One of Australia's best vocalists."

- Glam Adelaide



GLASSHOUSE PORT MACQUARIE PRESENTS

Down Under: The Songs That Shaped Australia

Sunday 13 April, 7.30pm

Down Under: The Songs That Shaped Australia is a multi award-winning, live music celebration of the Aussie hit-makers who spurred historic change with their iconic anthems.

Australian music is vast and varied; it captures the beauty and brutality of the land with storytelling at the forefront. Featuring classics from Midnight Oil, Cold Chisel, Paul Kelly, The Divinyls, ACDC, Tina Arena and more, reminisce the artists whose guts and determination shaped Australia's musical history. With the powerhouse vocals of acclaimed songstress Michelle Pearson and her incredible five-piece band, this nostalgic homecoming will have you on your feet!



Featured Song List:

Blue Sky Mine, Midnight Oil
Khe Sahn, Cold Chisel
Solid Rock, Goanna
Beds are Burning, Midnight Oil
To Her Door, Paul Kelly
Pleasure and Pain, The Divinyls
Kylie Minogue Medley
Help Is On Its Way, Little River Band
Blow Up The Pokies, The Whitlams
Chains, Tina Arena
It's a Long Way To The Top, ACDC
Down Under, Men At Work
You're The Voice, John Farnham
Am I Ever Going To See Your Face Again,
The Angels
I Touch Myself, The Divinyls

DURATION 70 minutes (no interval)

TICKETS \$55 Adult | \$45 Member | \$49 Concession

Transaction fees may apply.



Monty Python
meets Greek
history. A
hilariously
absurd, pop-
song fuelled
theatrical treat!



GLASSHOUSE PORT MACQUARIE AND NCM PRESENT
A SLIGHTLY ISOLATED DOG PRODUCTION OF:

The Trojan War

Friday 2 May, 11am & 8pm

Following the success of *Don Juan* and *Jekyll & Hyde*, award-winning NZ production company, A Slightly Isolated Dog, brings you their flirtatiously fun comedy: *The Trojan War*!

This explosive and hilarious work uses a cast of faux-French performers to create a joyful, interactive celebration. Theatrical magic, wicked pop songs and fierce wit is combined to create a delightful romp through this classic twisted tale.

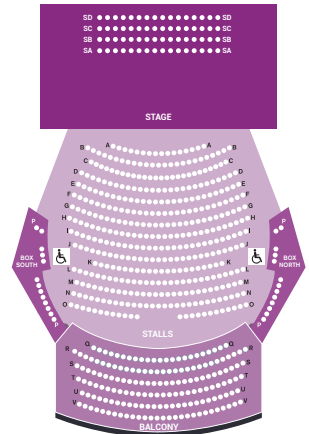
When Paris is born, it is prophesied that he will bring the destruction of the city. To avoid this fate, he is sent away to be sacrificed. But this starts a series of events that will inevitably lead to the destiny his parents were so desperately trying to avoid. *The Trojan War* tells the story of the tragic fall of Troy. It's a raucous celebration of our ridiculous lives: using this classic tale of gods and heroes to playfully explore questions around the current chaos of our times.

Don't just see the show - be part of it!

For the first time ever, audiences can book exclusive on-stage tiered seating for a truly interactive and unique experience.

Don't fear - you won't be looking at the back of the cast. This performance is designed to be viewed from all angles.

If you are ready to interact with the cast and be part of the fun, call the Box Office to book your special on-stage seat.



DURATION 70 minutes (no interval)
TICKETS \$60 Adult | \$50 Member | \$50 Stage Seating | \$55 Concession
Transaction fees may apply.
WARNINGS Strong language. Sexual references. Suitable for 15+.



**A fusion of opera
and country
music; songs and
arias of love and
life on the road**



GLASSHOUSE PORT MACQUARIE AND OPERA QUEENSLAND PRESENT

Are You Lonesome Tonight

Saturday 3 May, 7.30pm

"The performance was not what I expected an opera event to be. It was so much better ... It was a real feel-good experience."

– QLD audience member

Are You Lonesome Tonight is Opera Queensland's most ambitious regional tour in its 40-year history. Visiting more than 30 communities and travelling some 8,000 kilometres across Queensland, this show is coming to Port Macquarie.

With a cast of young Australian singers including Gabrielle Diaz, Marcus Corowa and Jonathan Hickey, *Are You Lonesome Tonight* features arias and songs by composers such as Puccini, Verdi, Slim Dusty and Dolly Parton, to name just a few.

Come in your jeans and boots or your tuxedos and ballgowns – this is opera that is diverse, accessible and exciting.

"These performers are faultless and it was so satisfying to hear all three voices performing together. After all, that is the key common denominator of both Opera and Country, the power of blended voices...."

– Stage Whispers

DURATION 105 minutes (includes interval)

TICKETS \$75.00 Adult | \$65.00 Member | \$70.00 Concession

Transaction fees may apply.





**A morning
of classical
masterpieces**

GLASSHOUSE PORT MACQUARIE AND
THE AUSTRALIAN CHAMBER ORCHESTRA PRESENT

A Morning with the ACO Collective Quartet

Thursday 8 May, 11am

A MORNING OF CLASSICAL MUSIC

Treat yourself to a morning of classical music with the ACO Collective Quartet.

This engaging and intimate performance will feature classical masterworks by Bach, Beethoven and Dvořák, alongside contemporary works by Philip Glass and Caroline Shaw, interspersed with delightfully informative introductions to the music.

Acclaimed for the energy and dynamism of their performances, the ACO Collective Quartet is made up of graduates from the Australian Chamber Orchestra's renowned Emerging Artist Program.

DURATION 60 minutes (no interval)

TICKETS \$50.00 Adult | \$40.00 Member | \$45.00 Concession
Transaction fees may apply.

WARNINGS Recommended for ages 12+.

Photo: Maria Boyadgis



ACO Australian Chamber Orchestra

PRINCIPAL PARTNER



GOVERNMENT PARTNERS



TOURING PARTNER



**The classic tale
told with live
music, shadow
puppetry,
animation and
fabulous theatrics.
Ages 6+**





GLASSHOUSE PORT MACQUARIE PRESENTS
AN AUSTRALIAN CHAMBER ORCHESTRA PRODUCTION

The Princess, The Pea (and The Brave Escapee)

An original play by Finegan Kruckemeyer with music by Bryony Marks

Friday 9 May, 10am & 11.45am

Isabella was born with everything. Daughter of the grandest king, surrounded by the greatest wealth, held in the highest castle. Her life is easy, but Isabella is not content and dreams of escaping palace life. One day, in the midst of a storm, when everyone is looking elsewhere, she finds her chance. Her amazing super senses guide her on a journey filled with daring feats and surprising friendships.

This stunning theatrical production comes alive with classical music performed live by ACO musicians. It's perfect for audiences of all ages who need a reminder that they can be brave, even if they feel scared of the unknown.

Written by award-winning playwright Finegan Kruckemeyer (*Magic Beach, Are We There Yet?*), with an original score by Bryony Marks (*Barracuda, Summer Heights High*), and directed by Tim McGarry (*There's a Sea in My Bedroom, Boy Swallows Universe*).

This is an exciting new ACO Families production that will ignite your imagination and heart.

DURATION 30 minutes + 15 minute post show Q&A

TICKETS \$26 Single

Transaction fees may apply.

Photos: Maria Boyadgis



ACO Australian Chamber Orchestra

PRINCIPAL PARTNER
Wesfarmers Arts

GOVERNMENT PARTNERS
Australian Government Creative Australia NSW

TOURING PARTNER
ARTS ON TOUR

**Live and in real-time,
direct to the
Glasshouse Studio**



GLASSHOUSE PORT MACQUARIE AND
MID NORTH COAST CO-OPERATIVE LIBRARY SERVICE PRESENT

Sydney Writers' Festival Livestream



Thursday 22 May to Sunday 25 May

Sydney Writers' Festival returns to Port Macquarie in 2025.

One of Australia's best-loved forums for literature, ideas and storytelling, *Sydney Writers' Festival* will stream its headline events from Sydney direct to the Glasshouse Studio over 4 days.

Get ready to be inspired and captivated by thought-provoking conversations, debates, and discussions as the *Sydney Writers' Festival Live & Local Program* delivers some of the world's most distinguished authors, journalists and social commentators directly to you in real-time. In addition to gaining insights from brilliant minds, attendees will have the chance to engage in Q&A sessions, sending their questions directly to the Sydney stage.



PER SESSION TICKET

\$13.00 Adult | \$8.50 Glasshouse/Library Member | \$10.00 Concession

PER DAY PASS*

\$46.00 Adult | \$28.00 Glasshouse/Library Member | \$34.00 Concession

*4 sessions per day. Bonus sessions not included

VIP FESTIVAL PASS | 21 Sessions[^]

\$126.00 For Glasshouse and Library Members only. Buyers will receive a VIP lanyard to identify them as VIP Festival Pass holders.

[^]Number of sessions subject to variation based on SWF scheduling

Transaction fees may apply.

A 'grosstacular'
adventure
with explosive
scientific
surprises



**YOU ARE A
DOUGHNUT**

GLASSHOUSE PORT MACQUARIE AND THAT SCIENCE GANG PRESENT

You Are A Doughnut

Thursday 22 May & Friday 23 May, 10am & 12.30pm

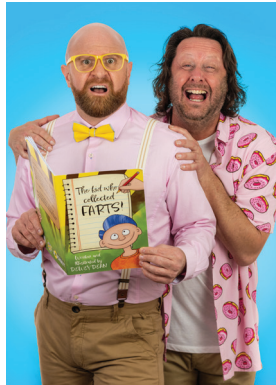
Join biology teachers Oesoph A. Gus and Dewey Dean for a brilliantly grosstacular tour of the human digestive system – with sketches, songs and sensational science.

Along the way you'll encounter a frenzy of enzyme-powered ping pong balls, sing along with a rainbow collection of poop puppets and witness the weirdest poetry performance you've ever seen. It's a fast-paced variety hour, with each new digestive destination inspiring a wonderfully unusual performance.

★★★★★

"...a lesson on the human digestive system in the most fun, action-packed way you could possibly imagine"

– GLAM ADELAIDE 2022 | Ben Stefanoff



DURATION 60 minutes (no interval)
TICKETS \$30 Single
Transaction fees may apply.
WARNINGS Some loud noises, flashing lights and haze effects.



That
Science!
Gang.

NCM



Life, love and making money, as things heat up



GLASSHOUSE PORT MACQUARIE AND BELVOIR ST THEATRE PRESENT

Scenes from the Climate Era



Written by David Finnigan. Directed by Carissa Licciardello

Supported by Oranges & Sardines, Patty Akopiantz & Justin Punch

Saturday 14 June, 7.30pm & Monday 16 June, 11am

Belvoir St Theatre graces the Glasshouse stage for the first time ever with a stunning work that delivers an engaging climate conversation in an affecting theatrical experience.

From the mind of David Finnigan, an Australian writer and game developer at the forefront of climate change research and writing, comes a wild race through short scenes exploring an uncertain future of beaches where once there were none, travelling the world when aeroplanes are gone, oh, and zombie mice.

Remarkable, illuminating and shocking, *Scenes from the Climate Era* takes you through over fifty short plays that catch the exhilaration, frustration and fascination of living in interesting times.

Equal parts comedic and thought-provoking, but never wagging its finger in your face, *Scenes from the Climate Era* is a play about now – about the choices we made yesterday and the difficult beauty of tomorrow.

“The theme of hope rises up like the human spirit within the script.”

– Artshub

DURATION 80 minutes (no interval)

TICKETS \$60 Adult | \$50 Member | \$55 Concession

Transaction fees may apply.

WARNINGS Contains the use of strobe lighting. Some elements of the show's design may affect people with coeliac disease. Recommended for 15+.



Birdrock Bar & Grill Melbourne Comedy Festival Pre-Show Function

Mercure Centro Hotel Port Macquarie invites ticket holders to Birdrock Bar & Grill on June 28 from 5pm to 7pm for a pre-show gathering ahead of the *Melbourne International Comedy Festival Roadshow!*

For only \$30 per person, enjoy:

- A glass of wine or beer on arrival
- Delicious canapés and a grazing station from 5.30pm to 6.30pm in Birdrock's Front Bar
- Special "comedy cocktails" offered at a discounted rate

Secure your place with Birdrock directly at: www.birdrockbar.com.au
(must have a valid ticket to MICF to attend)

Spots are limited to the first 50 *Melbourne International Comedy Festival Roadshow* ticket holders to book!



Book your pre
laugh drinks at
Birdrock now!

BIRDROCK
BAR | GRILL

MELBOURNE INTERNATIONAL
COMEDY FESTIVAL ROADSHOW

GLASSHOUSE PORT MACQUARIE AND MERCURE CENTRO PORT MACQUARIE PRESENT

Melbourne International Comedy Festival Roadshow



Saturday 28 June, 7.30pm

Australia's most iconic comedy tour is hitting the road for a huge 27th year! Bringing together the brightest stars from the 2025 *Melbourne International Comedy Festival Roadshow*, we're delivering top-tier humour straight to Port Macquarie!

Featuring a dynamic line-up of comedy legends and fresh faces, this year's Roadshow promises nation-wide happiness. So, grab your friends, lock in your tickets and prepare for a much-needed dose of laughter as the 2025 *Melbourne International Comedy Festival Roadshow* rolls into Port Macquarie.



DURATION 2 hours (includes interval)

TICKETS \$59.90 Adult | \$54.90 Member | \$54.90 Concession | \$54.90 Group 8+
Transaction fees may apply.

WARNINGS Coarse language, adult themes, sexual references and material that may offend. Recommended for 15+. Smoke machine/hazer may be used.

CREATIVE VICTORIA

BIRDROCK
BAR | GRILL

MERCURE
HOTEL

CENTRO PORT MACQUARIE

A darkly comedic and
entertaining play about
Elizabeth II's governess



★★★★

"tartly funny and inventive"

- *Limelight*

GLASSHOUSE PORT MACQUARIE PRESENTS AN ENSEMBLE THEATRE PRODUCTION

The Queen's Nanny

BY MELANIE TAIT. DIRECTED BY PRISCILLA JACKMAN

Wednesday 2 July, 8pm

Inspired by historical events, a royal scandal ignites a blistering fire between the steely Queen Mother and her children's dotting nanny in Melanie Tait's sparkling new comedy drama.

Marion 'Crawfie' Crawford adored her job as governess to Princesses Lilibet and Margaret Rose... until she was ostracised without warning, despite dedicating the best part of her life to raising, educating and caring for the young royals. The reason? A tell-all memoir.

From the creative team behind the sell-out success of THE APPLETON LADIES' POTATO RACE, this blackly funny play imagines a series of pivotal moments between two strong-spirited women harbouring complicated resentment.

★★★★

"Melanie Tait has threaded the needle between sensationalist drama and cosy character study with the skill of a master seamstress."

- Cultural Binge



DURATION 90 minutes (no interval)

TICKETS \$59.90 Adult | \$49.90 Member | \$54.90 Concession
Transaction fees may apply.

WARNINGS Adult themes, theatrical haze, gun shots and flashing lights.
Recommended for 12+.

Image: Brett Boardman



THE QUEEN'S NANNY was commissioned by Ensemble Theatre through its Commissioners' Circle.

This project has been assisted by the Australian Government through Creative Australia, its principal arts investment and advisory body.



**An exhilarating musical odyssey,
mesmerising vocals, electrifying
live music and innovative
animated projections**

GLASSHOUSE PORT MACQUARIE AND HUMAN SYMPHONY PRESENT

MZAZA

The Birth and Death of Stars

Sunday 20 July, 3pm

Take a step away from the everyday and contemplate our place in the universe to the sounds of some of Australia's most uniquely diverse musicians and composers. World music favourites MZAZA have created a theatrical musical experience like no other in collaboration with some of Australia's leading theatre-makers. *The Birth and Death of Stars* is a show that invites audiences to leave the daily world behind to contemplate our magical place in the universe.

Based on the album of the same name, the show draws inspiration from history's philosophers and astronomers, leading us on a surreal voyage through the ether to explore what links us to each other and the world around us in ways that are poetic, moving and at times funny. Sitting comfortably between music and theatre, the show is brought to the stage by a powerful collaboration of creative minds featuring director Benjamin Knapton, writer Pauline Maudy, Finnish animator Laura Matikainen and design consultant Alison Ross.



DURATION 75 minutes (no interval)

TICKETS \$54.90 Adult | \$45.90 Member | \$49.90 Concession

Transaction fees may apply.

WARNINGS Haze



NCM



This project has been assisted by the Australian Government through Creative Australia, its principal arts investment and advisory body.

**Come behind
the scenes to
experience
SDC's magic**



GLASSHOUSE PORT MACQUARIE PRESENTS

Sydney Dance Company Sneak Peek

Saturday 2 August, 2pm

Join Sydney Dance Company for an insightful Sneak Peek before the evening main stage performance of Rafael Bonachela's *momenta*. During this engaging 'fly on the wall' experience, you will have exclusive behind the scenes access to a Sydney Dance Company rehearsal.

- View the last 15 minutes of a company warm-up class
- Engage in a 15 minute talk and Q&A with Sydney Dance Company's Rehearsal Director who will share contextual information about the creative processes explored to create the work
- View 30 minutes of a professional dance rehearsal



DURATION 60 minutes (no interval)

TICKETS \$14 Single
Transaction fees may apply.

WARNINGS This production may include strobe lighting, strobe-like lighting effects and theatrical haze.



**SYDNEY
DANCE
COMPANY**

**Contemporary
dance excellence
by Australia's best**



★★★★★

*“momenta is an electric
and arresting celebration
of light and life...”*

– Sydney Morning Herald

GLASSHOUSE PORT MACQUARIE PRESENTS SYDNEY DANCE COMPANY'S

momenta

Choreographed by Artistic Director Rafael Bonachela

Saturday 2 August, 7.30pm

+ Post Show Q&A

Sydney Dance Company explodes onto the stage in Rafael Bonachela's *momenta*. From the most tender exchanges to an intense physical storm, witness an extraordinary force of movement, striking individuality and powerful unity, escalating to a joyous release.

The connection is instinctive. The moment is transformational.

momenta takes audiences on a journey into the poetry and physicality of human bonds. This mesmerising work presents a kaleidoscope of energy, capturing moments where individual trajectories collide and intertwine.

The dancers transcend physical limitations, exploring the full range of their bodies with grace, power and vulnerability. Each moment resonates through space, drawing the audience into a world of raw emotion.

Through the captivating interplay of Bonachela's signature choreographic style, Nick Wales' evocative soundscapes, Elizabeth Gadsby's arresting set design and Damien Cooper's striking lighting, *momenta* gathers the hurtling vectors of our lives into confluence and connection. For audiences and dancers alike, it is an invitation to rejoice in the beauty and fragility of our shared humanity.

DURATION 75 minutes (no interval)

TICKETS \$79.90 Adult | \$69.90 Member | \$74.90 Concession
\$59.90 U18 (proof of ID required)
Transaction fees may apply.

WARNINGS This production will include strobe lighting, strobe-like lighting effects and theatrical haze.



**SYDNEY
DANCE
COMPANY**

**ARTS
ON
TOUR**


Australian Government

**Creative
Australia**

**NSW
GOVERNMENT**

The Sydney Dance Company 2025 National Tour has been assisted by the Australian Government through Creative Australia, its principal arts investment and advisory body, and is supported by the NSW Government through Create NSW.

**A heartwarming
family musical
about big dreams
and self-belief
for ages 4+**



GLASSHOUSE PORT MACQUARIE PRESENTS A
MONKEY BAA THEATRE COMPANY PRODUCTION

Josephine Wants to Dance

Based on the book by Jackie French and Bruce Whatley
Adapted by Eva Di Cesare, Sandie Eldridge and Tim McGarry

Tuesday 12 August, 1pm

Wednesday 13 August, 9.30am & 11.30am

A hilarious musical about the importance of believing in yourself and realising your dreams and... a dancing kangaroo!

This delightful musical is a must-see!

Josephine is a kangaroo who loves to dance. Her little brother, Joey, tells her kangaroos don't dance, they hop - but Josephine continues to point her toes and leap through the air. When a ballet troupe comes to the sleepy town of Shaggy Gully, Josephine desperately wants to dance like the ballerinas in pink tutus and silk ballet shoes.

On the day of the first performance the Ballet Company is in trouble. The prima ballerina twists her ankle and the understudy has a splinter in her toe. Who can dance the lead role? Josephine's talents are called upon to help save the day. Can she do it, and more importantly, does it matter that she's a kangaroo?

★★★★ **"A complete delight."**

– Jo Litson, Daily Telegraph

DURATION 50 minutes (no interval)

TICKETS \$30 Single
Transaction fees may apply.

WARNINGS Theatrical haze.

Images: Alex Vaughan



monkey theatre
baa co.

ARA



Creative
Australia

NSW
GOVERNMENT

ARTS
TOUR

SYDNEY COMEDY FESTIVAL

SHOWCASE



GLASSHOUSE PORT MACQUARIE PRESENTS



Sydney Comedy Festival Showcase 2025

THE FESTIVAL'S FUNNIEST IN ONE HILARIOUS NIGHT!

Friday 29 August, 8pm

The *Sydney Comedy Festival Showcase* tour will be tearing up the freeways of Australia to bring the best of the 2025 Festival!

Expertly curated and lovingly presented, the Showcase will feature some of the festival's hottest acts live on stage for an incredible two hours of hard-hitting laughter. Boasting a line-up of veteran favourites and some of the freshest emerging talents, this jam-packed night of pure entertainment will leave you sore from belly laughs!

"The comedians all knew what they had to do to get a laugh, and had the crowd in constant stitches... the talent on show definitely left the crowd wanting more..."

– AU REVIEW



DURATION 2 hours (includes interval)

TICKETS \$45.00 Single | \$40.00 Member

Transaction fees may apply.

WARNINGS Coarse language, sexual references, adult themes. Not suitable for children.



GLASSHOUSE PORT MACQUARIE PRESENTS

Lumières De Paris [Lights of Paris]

Friday 5 September, 11am

MORNING MELODIES

A New Musical Kaleidoscope

LUMIÈRES DE PARIS is the new Musical Kaleidoscope spinning around so many musical genres with only "ONE" common denominator: a whirlwind of mostly French music in all possible forms and coming at you from all directions with Paris as a backdrop.

You can also expect French adaptations of international works that have established themselves into the French repertoire.





Operetta, musicals and French variety; a carousel of songs with 'The City of Lights' as a backdrop

Like a magnet, PARIS has over the centuries, attracted and inspired some of the most famous composers, songwriters and artistes.

From Brel to Benatzky
From Aznavour to Puccini
From Piaf to Franz Lehar
From Yves Montand to George Bizet
And the must-haves: Boublil, Schonberg and Lloyd Webber

The combination of opera, operetta, musicals and French variety is a feast for the ears and without a doubt offers an escape to another world... a world where the protagonists enchant and delight as they venture on this carousel of songs from *Carmen*, *Les Misérables*, *The Phantom of the Opera*, *The Merry Widow*, *The White Horse Inn*, *Gipsy Baron*, *The Daughter of the Regiment*, *Mr Carnival* plus classics from Edith Piaf, Charles Aznavour, Yves Montand and Jacques Brel.

Lumières de Paris is an Australian Premiere and is performed in French, English and Italian.

Award Winning Milko Foucault-Larche and Parisian born Corinne Andrew have emerged in recent years as the leading and most active ambassadors of French popular music in Australia today. They are joined on this carousel of songs by Australian soprano Emily Garth.

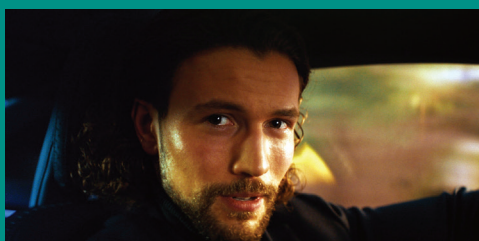
DURATION 75 minutes (no interval)

TICKETS \$35.00 Adult | \$25.00 Member | \$29.00 Concession

Transaction fees may apply.

Image: Brett Boardman

ONE WORLD.
ONE WEEK.
ONE FESTIVAL.



MANHATTAN
SHORT

**THE WORLD'S FIRST
GLOBAL FILM FESTIVAL**

GLASSHOUSE PORT MACQUARIE PRESENTS



Manhattan Short Film Festival

Friday 3 October, 7.30pm

Manhattan Short Film Festival is a one-of-a-kind worldwide event, taking place in over 500 venues across six continents.

The final films represent the best short films from over 1,000 submissions from around the world, covering an extraordinary range of genres including drama, science fiction, suspense, animation and comedy.

By virtue of their selection by Manhattan Short, each short film is automatically Oscar-qualified.

A must-see film festival for anyone interested in drama, film and entertainment.

DURATION 150 minutes (includes 20-minute interval)

TICKETS \$22.50 Adult | \$17.50 Member | \$20.00 Concession/U18

Transaction fees may apply.

WARNINGS Possible strong language, adult themes and sexual references.
Suitable for ages 13+. Parental guidance recommended.

**The greatest love
story ever told**



GLASSHOUSE PORT MACQUARIE PRESENTS BELL SHAKESPEARE'S

Romeo & Juliet

BY WILLIAM SHAKESPEARE. DIRECTOR PETER EVANS

Saturday 4 October, 7.30pm

Did my heart love till now?

Act 1, Scene 5



After a chance meeting, an intense but forbidden love is ignited between two young lovers, Romeo and Juliet. Despite the unending, violent feud between their families, they will risk everything to be together.

This raw portrayal of *Romeo & Juliet* will envelop you in the passion, the intensity and the heartbreak of Shakespeare's most evocative tragedy.

Peter Evans' critically acclaimed production of the greatest love story ever told returns to stages in 2025. Introducing the magnetic Madeline Li as Juliet, this exquisite production is not to be missed.

DURATION 150 minutes (includes interval)

TICKETS \$84.90 Adult | \$74.90 Member | \$79.90 Concession

Transaction fees may apply.

WARNINGS Shakespeare's original play contains depictions of violence, murder, sexual references and suicide. Recommended for 13+.

**BELL
SHAKESPEARE**



Bell Shakespeare is assisted by the Australian Government through Creative Australia, its principal arts investment and advisory body, and by the NSW Government through Create NSW.



**Get up close and
personal with
Beethoven's mighty
Eighth Symphony**

GLASSHOUSE PORT MACQUARIE PRESENTS

Australian Haydn Ensemble: Beethoven's Eighth

Thursday 6 November, 7pm

"It was a marvellous performance by the seven instrumentalists which did more than ample justice to Beethoven in this powerful rendition."

– Sounds Like Sydney 2024

This superb program revolves around the tantalizing enigma of the *Immortal Beloved* letters. AHE performs Beethoven unplugged, while young Sydney composer Ella Macens embraces baroque tuning with a new commission inspired by Ludwig's passionate *Declarations*.

Beethoven's Eighth Symphony is an utterly delightful homage to Haydn, full of wit and musical slapstick. Also on the bill, the remarkable rip-off that is the Fifth Symphony in D minor by Beethoven's friend, pupil and long-suffering PA, Ferdinand Ries and one of the first string sextets ever written, Boccherini's Op. 23 No. 6 in F major. A sumptuous masterpiece that deserves classic status.

Celebrate the onset of balmy evenings with this heady musical fling.



DURATION 120 minutes (includes 20-minute interval)

TICKETS \$59.90 Adult | \$49.90 Member | \$55.90 Concession

Transaction fees may apply.

Image Helen White

EXCLUSIVE

BUY A SHOW TICKET TO GAIN EXCLUSIVE ACCESS TO ATTEND THE PRE-SHOW FUNCTION FOR THE SAME PERFORMANCE!

The Glasshouse is thrilled that Angove Family Winemakers will once again be the official host and sponsor of our 2025 Pre-Show Functions!

Join us on show night to enjoy Angove wines, cheese and fruit platters and mingle with like-minded theatre goers.

BE QUICK, LIMITED PLACES ARE AVAILABLE TO THESE EXCLUSIVE FUNCTIONS!

ANGOVE SINCE 1886 FAMILY WINEMAKERS

Angove Family Winemakers are committed to supporting local businesses and are proud to be in our eighth year of partnership with the Glasshouse. We are delighted to be sponsoring the Pre-Show Functions for Glasshouse SELECT Theatre shows in 2025.



STUDIO SERIES CUVÉE BRUT

This is a full-flavoured sparkling wine with a creamy, rich complexity showing fresh fruit flavours and a characteristic toastiness.

STUDIO SERIES SAUVIGNON BLANC

This wine has all of the characteristic green grass and guava aromas with hints of passionfruit. The clean refreshing palate shows abundant ripe fruits and light kiwi fruit notes.

Enjoy these wines at Encore Bar.

STUDIO SERIES SHIRAZ

Rich, ripe spicy fruit aromas combine with wood aged characters derived from slow, extended barrel maturation to provide a smooth, full bodied wine designed for early drinking.

VILLA JOLANDA PROSECCO

Clean with lively aromatic apple and pear aromas, the palate is light and well balanced. With a persistent fine bead and lower alcohol this wine is traditionally a wine for celebration and is ideal as an aperitif.

Pre-Show Functions



Are You Lonesome Tonight

Saturday 3 May

Level 2 Mezzanine Foyer,
Function starts at 6pm



The Queen's Nanny

Wednesday 2 July

Level 2 Mezzanine Foyer,
Function starts at 6.30pm



Romeo & Juliet

Saturday 4 October

Level 2 Mezzanine Foyer,
Function starts at 6pm

IMPORTANT 2025 PRE-SHOW FUNCTION INFORMATION

Cost: \$8 Member | \$12 Adult

Guests to receive a drink on arrival
and cheese and fruit platters.

EACH EVENT IS CAPPED AT
100 GUESTS

TO BOOK: Contact the Box Office
to purchase alongside your show
ticket. Cannot be booked online.

Glasshouse SELECT Theatre Program 2025 Priority Bookings

Members priority booking period
(Members can book for family and friends*)
From 7pm, Thursday 30 January, 2025 (Launch
Night) to 4pm, Wednesday 12 February, 2025

*Member price applies only to Member's ticket.

General public sales

From 9am, Thursday
13 February, 2025

TO BOOK

glasshouse.org.au | 02 6581 8888

Corner Clarence & Hay Streets, Port Macquarie



GLASSHOUSE PORT MACQUARIE